

1000BASE-TX MAGNETICS MODULES

Designed to Support 1:1 Turns Ratio Transceivers

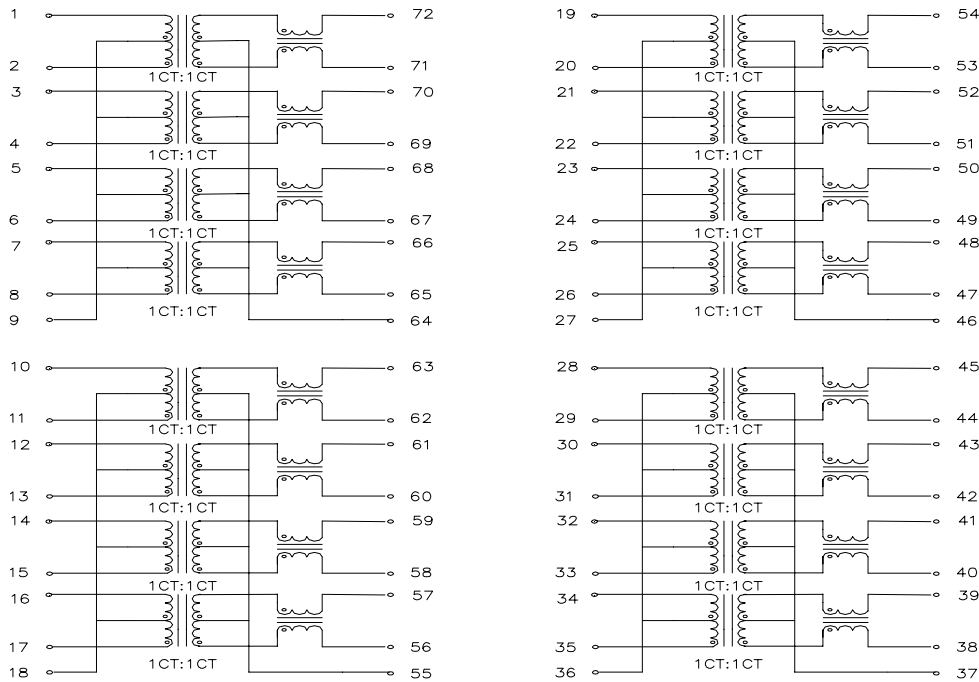
Features:



- Designed for long haul Gigabit Ethernet 100/1000Base-T, full Quad channels applications.
- Supports 16 pairs of category 5 UTP cable
- Cable interface for isolation and low common mode emissions
- Compliant with IEEE 802.3ab standard for 1000Base-T
- For RoHS part Number add suffix “R”¹
- Non-PoE Product.
- Primary inductance(Lp)350uH Min.@100KHz,0.1Vrms,DC 8mA
- Capacitance between windings (Cww)120pF Max(at 100kHz, 0.1V).
- Leakage Inductance (LL) 0.5uH Max (at 100kHz, 0.1V).
- DCR Pri 0.9ΩMax Sec 1.4Ω Max
- Balance Inductance (BL) 1.0uH Max (at 100kHz, 0.1V).
- Operating Temperature 0°C to +70°C, 10%~90%RH .
- RoHS compliance.

		Specifications: at 25 °C.						Operating Temperature 0°C to 70°C							
Part No.	Turns Ratio (±5%)	Insertion Loss (dB Max)	Return Loss (dB Min @Load 100Ω)						Differential to Common Mode Rejection (dB Min)			Crosstalk (dB Min)			Hi-pot
	pri to sec		1-100 MHz	1-30MHz	40MHz	50MHz	60-80MHz	100MHz	30MHz	60MHz	100MHz	30MHz	60MHz	100MHz	
HST-72020DR	1CT:1CT	-1.0	-18	-14.4	-13.1	-12	-10	-40	-35	-30	-40	-35	-30	1500VAC/1mA/60S	

Schematic:



1000BASE-T MAGNETICS MODULESHS

Dimension:mm(inch),Unless otherwise specified , all tolerance are±0.25(0.01)

