

10/100/1000BASE-TX VoIP MAGNETIC MODULE



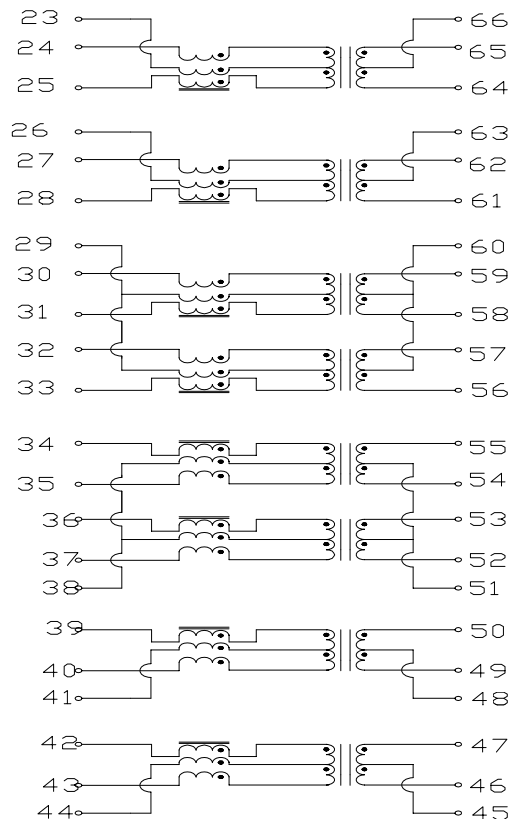
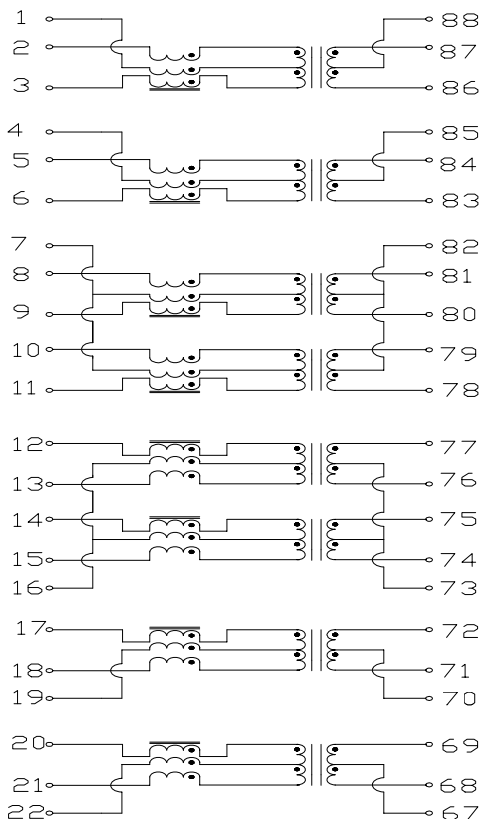
Features:

- Compliant with IEEE 802.3 standard for 1000 BASE-T.
- Primary inductance(Lp)350uH min.@ 100KHz,0.1Vrms,8mA.
- Designed for long haul gigabit Ethernet 1000 BASE-T, full duplex applications
- Capacitance between windings (Cww)75pF Max(at 100kHz, 0.1V).
- Leakage Inductance (LL) 0.35uH Max (at 100kHz, 0.1V).DCR 1.2Ω Max.
- Supports 16 pairs of category 5 UTP cable.
- Cable interface for isolation and low common mode emissions.
- Comply with RoHS requirements-whole part No Cd, No Hg,
- No Cr6+, No PBB and PBDE and No Pb on external pins.
- Storage temperature -25°C to +125°C.
- RoHS compliant.

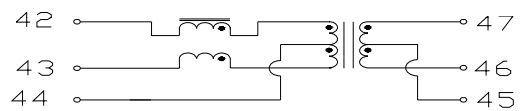
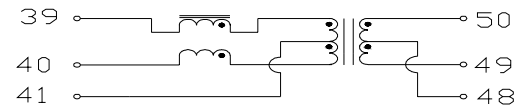
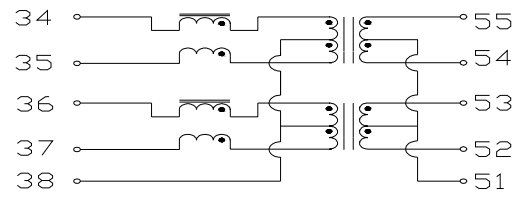
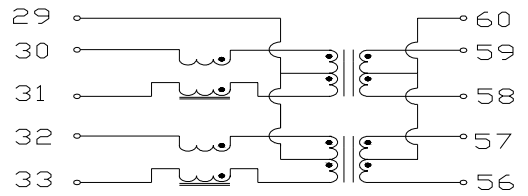
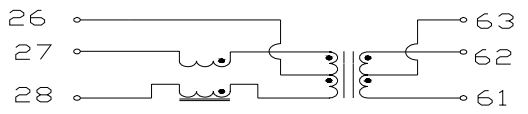
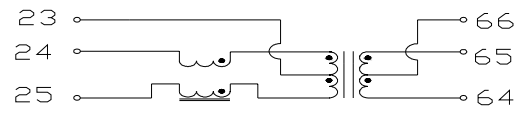
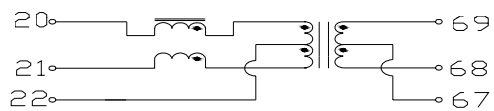
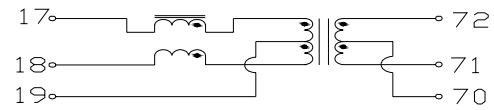
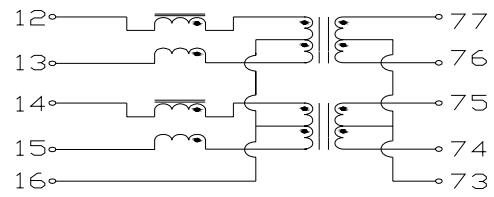
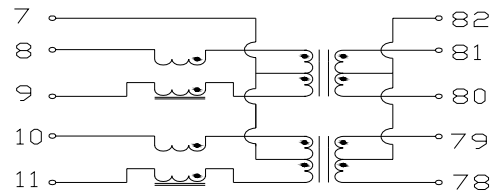
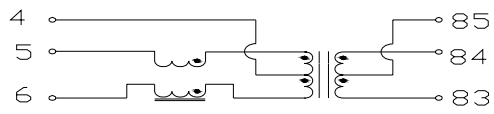
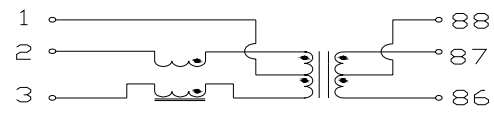
Electrical Specification@ 25°C

Part No.	Turn Ratio RX.TX .	PoE or Non PoE	Operating Temperature	Insertion loss (dB max) 0.1-100MHz	Return loss(dB min .) MHz					DCMR (dB typ .) MHz			Crosstalk (dB min .) MHz			Isolation Volage (Vrms)
					1-30	40	50	60-80	100	30	60	100	30	60	100	
HST-88019DR	1CT:1CT/1CT:1CT	Non PoE	0°C to +70°C	-1.1	-18	-16	-13.1	-12	-10	-40	-35	-30	-40	-35	-30	1500VAC/1mA/60S
HST-88020DR	1CT:1CT/1CT:1CT	PoE	0°C to +70°C	-1.1	-18	-16	-13.1	-12	-10	-40	-35	-30	-40	-35	-30	1500VAC/1mA/60S
HST-88021DR	1CT:1CT/1CT:1CT	Non PoE	0°C to +70°C	-1.1	-18	-16	-13.1	-12	-10	-40	-35	-30	-40	-35	-30	1500VAC/1mA/60S
HST-88022DR	1CT:1CT/1CT:1CT	PoE	0°C to +70°C	-1.1	-18	-16	-13.1	-12	-10	-40	-35	-30	-40	-35	-30	1500VAC/1mA/60S

Schematic:HST-88019DR/HST-88020DR



Schematic:HST-88021DR/HST-88022DR



1000BASE-TX MAGNETICS MODULES

Designed to Support 1:1 Turns Ratio Transceivers

Dimension:mm(inch),Unless otherwise specified , all tolerance are±0.25(0.01)

